

Building an ENETOSH network in Spain: SWOT analysis

Nuria Mancebo
EPS- University of Girona
Chair of Health and Safety

Building an ENETOSH network in Spain: SWOT analysis

<http://www.enetosh.net>

Why?

- ENETOSH is an **open** network.

<http://www.enetosh.net>

Why?

- ENETOSH is an open network.

Anyone who is **committed to promoting quality in education and training in occupational safety and health** and advancing the process of mainstreaming OSH into education and training at the national and European level, in line with the fundamental aim pursued by ENETOSH, can become a member.



<http://www.enetosh.net>

Why

- ENETOSH is an open network.

Anyone who is committed to promoting quality in education and training in occupational safety and health and advancing the process of mainstreaming OSH into education and training at the national and European level, in line with the fundamental aim pursued by ENETOSH, can become a member.

- Members can be **institutions or individuals**, i.e. legal or natural persons.



Building an ENETOSH network in Spain: SWOT analysis

<http://www.enetosh.net>

- ENETOSH is an open network.
- Anyone who is committed to promoting quality in education and training in occupational safety and health and advancing the process of mainstreaming OSH into education and training at the national and European level, in line with the fundamental aim pursued by ENETOSH, can become a member.
- Members can be institutions or individuals, i.e. legal or natural persons.
- **Where possible**, the members pay a share of the hosting and editing costs for the ENETOSH internet platform.
- ENETOSH is keen to develop national networks in order to improve cooperation between OSH and education experts at the national level. We are also looking for people who are willing to mentor a national network.



Building an ENETOSH network in Spain: SWOT analysis

<http://www.enetosh.net>

- ENETOSH is an open network.
- Anyone who is committed to promoting quality in education and training in occupational safety and health and advancing the process of mainstreaming OSH into education and training at the national and European level, in line with the fundamental aim pursued by ENETOSH, can become a member.
- Members can be institutions or individuals, i.e. legal or natural persons.
- Where possible, the members pay a share of the hosting and editing costs for the ENETOSH internet platform.
- ENETOSH is keen to **develop** national networks in order to **improve cooperation** between OSH and education experts at the national level.
- We are also looking for people who are willing to mentor a national network.



From expectation..... to reality

- Quality
- Strategy
- Culture of innovation and continuous improvement, participative

| | HELPFUL | HARMFUL |
|-----------------|---------------|------------|
| INTERNAL ORIGIN | STRENGTHS | WEAKNESSES |
| EXTERNAL ORIGIN | OPPORTUNITIES | THREATS |

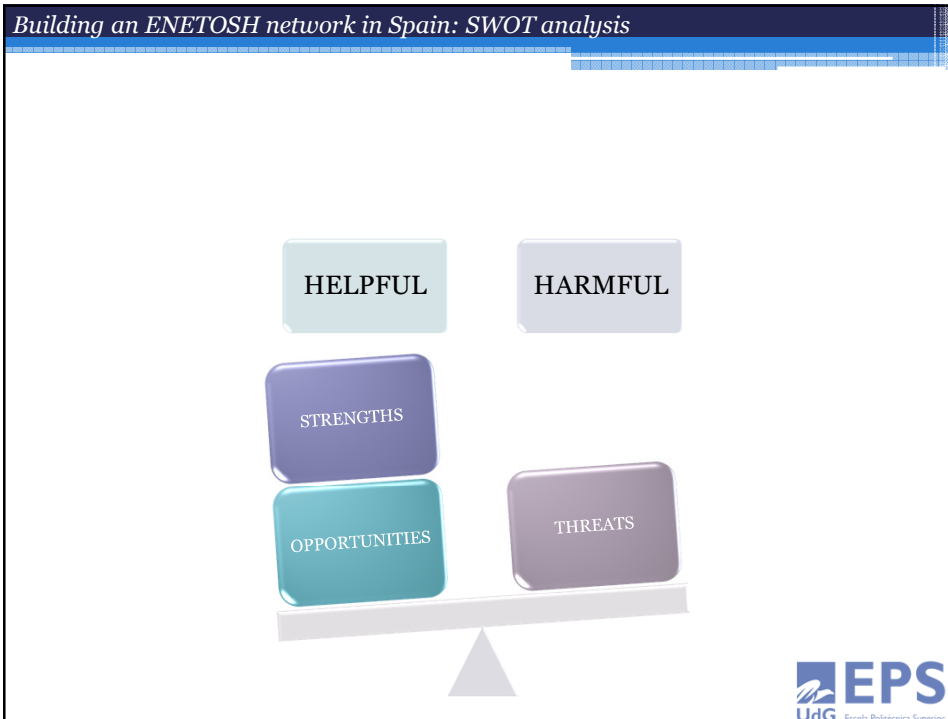
Building an ENETOSH network in Spain: SWOT analysis

- **Strengths:** characteristics of the network/team that give it an advantage over others
- **Weaknesses (or Limitations):** characteristics that place the team at a disadvantage relative to others
- **Opportunities:** external chances to improve performance in the environment
- **Threats:** external elements in the environment that could cause trouble for the project



Building an ENETOSH network in Spain: SWOT analysis





- Building an ENETOSH network in Spain: SWOT analysis*
- The factors related to users
 - N = Needs
 - W = Wants
 - S = Security
 - E = Education: “user education”
 - «User (broad sense), need to compass our target users»
- EPS
UdG Español Politécnico Superior

Building an ENETOSH network in Spain: SWOT analysis

- In addition to the user target group, there are various uncontrollable external environmental factors encircling the organization.
- National and International circumstances
- Social and Cultural circumstances
- Economic circumstances



Building an ENETOSH network in Spain: SWOT analysis

| | HELPFUL | HARMFUL |
|-----------------|---|--|
| INTERNAL ORIGIN | <ul style="list-style-type: none"> • Starting point networking resources • Organizational support • Internationalization is a valuable asset • Stability of active members • Recognition of the leader organization in the field | <ul style="list-style-type: none"> • Internal competing agendas and priorities of members • Stability of members • Passive role • Leader profile • Language skills of members |
| EXTERNAL ORIGIN | <ul style="list-style-type: none"> • New strategy of regional government includes specifically the objectives of the network • Long term vision • Labour inspection demands are more quality oriented • The added value of Occupational Health and safety | <ul style="list-style-type: none"> • The short term vision • Prejudgement of the dynamic because of previous experiences • Centralistic networks • New ground, existent power tensions • Downsizing public administration |

Building an ENETOSH network in Spain: SWOT analysis



Nuria Mancebo
Nuria.mancebo@udg.edu

EPS- University of Girona
Chair of Health and Safety
www.udg.edu

