

Integrating Education and OSH into the Education Sector

**Inspector Hilary Mooney
Health and Safety Authority Ireland**

Feb 2010

Education Strategy





Education Sector Stats

- Numbers employed in the education sector in Ireland (2007) = 139,100
- Number of full-time students in Irish institutions 2007/2008 = 943,599
- Number of Irish schools 2007/2008 (Primary & Post Primary) = 4,016



3 tiers of education

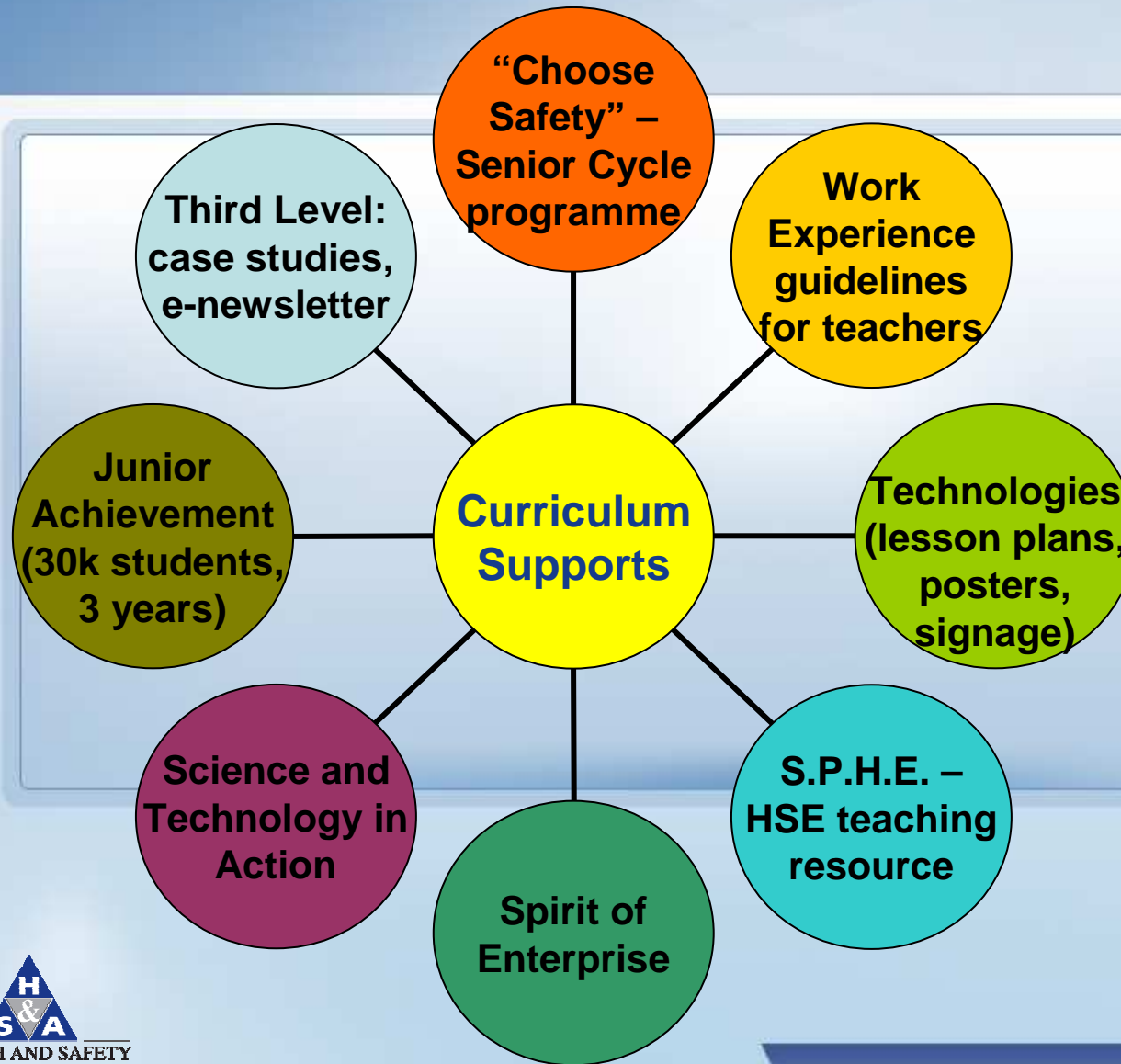
- The education system can be divided into 3 main tiers: Primary, Post-Primary (also called Second Level) and Third Level.



Integrating OSH and Education

- The HSA are using a twin tracked approach to integrate OSH and Education into the Education System.
- The two approaches are
 1. Curriculum based approach
 2. Education sector management of OSH

Curriculum Supports



Education Sector Management



- Education sector – the conduit for delivering change
- Guidelines for managing safety in post primary schools
- Teacher Training
- E-learning (Science, Technologies, Principals)
- Compliance Inspections Carried out by HSA

Technology in Education

E-learning/m-learning

Free to access, self-directed, self-paced learning

- Technologies teachers
- Science teachers
 - Principals/safety officers in schools
 - launched in summer '09/achieved formal recognition by Dept of Ed
 - 422 primary school teachers have completed
- Senior Cycle students (learning mgt system)



E-learning screen shots

The screenshot shows an e-learning interface with a central workspace. On the left, a large yellow triangular warning sign with a black exclamation mark is displayed. Below it, a white speech bubble contains the text: "Welcome to the Identifying Hazards in the Workplace lesson." In the center, three green stick figures illustrate workplace hazards: one using a jackhammer, one sitting at a desk with a red lightning bolt indicating a back injury, and one lifting a heavy box with a red lightning bolt indicating a back injury. The interface includes several navigation and control elements: an "EXIT" button in the top right; a vertical sidebar with icons for a checkmark, water bottles, a speaker, and a letter 'A', with the word "TOPICS" below them; a bottom navigation bar with a globe icon, a "Hazards" button, a wheelchair accessibility icon, and buttons for back, pause, and forward; and a "1 of 13" indicator in the bottom right corner.



E-learning Screenshots

Knowledge and preparation is key: If you don't recognise that there is a hazard, you cannot prepare for it!

EXIT

TOPICS

5 of 13

Hazards

Serious Gaming

- Developing software games for a new generation of learners (15-/18 year olds)
- linked to curriculum
- how do they learn?
- readily accessible and understood
- link to social networking sites
- Will be hosted on a third party website





HSA Prevention and Compliance Unit collaboration for Post Primary School Inspections

- 2010 approx 400 inspections will be carried out by HSA inspectors in Primary and Post Primary Schools
- The inspector will look at the work activities being undertaken and statutory documentation required under the 2005 Act.
- **Approach will encompass:**
 - Advice; Guidelines produced to aid Schools
 - Enforcement action



Field Inspection

- **Is there any documentation the school can use to devise these documents 'in-house'?**
- The HSA are producing a set of Guidelines for use in Schools. This will enable the school to generate a Safety Statement using the step-by-step information in the guidelines.
- The Guidelines also has Risk Assessment Templates so the individual teachers can use these to conduct Risk Assessments in their own classrooms.



Guidelines for Post Primary Schools for Managing Health and Safety at Work

- Developed by a partnership approach by the
- Health and Safety Authority
- Department of Education
- State Claims Agency
- Schools Development Planning Initiative



Guidelines for schools

Aims to:

- Assist schools plan, organise and manage an effective safety and health management system.
- Help schools evaluate current policies and practices according to the legislative requirements and best practice standards.
- Enable schools write or update their safety statements.
- Enable schools create or update their risk assessments.
- Facilitate school management and employees with their respective roles in operating and reviewing safety and health best practice.
- Reduce the administrative burden on schools.



Guidelines- the sections

- **Introduction**
- Who should read these Guidelines?
- Essential Terms
- Why Manage Safety and Health?
- Who is responsible for Safety and Health in Schools?
- Board of Management Duties as employer
- Employee Duties
- Board of Management Duty of Care under Civil Law
- The Tort of Negligence
- Vicarious Liability
- Board of Management Duties under Occupier's Liability
- Types of Accidents and Incidents in Schools

Managing Safety in Schools

- **Step 1:** Policy and Commitment
- **Step 2:** Planning
- **Step 3:** Implementation
- **Step 4:** Measuring Performance
- **Step 5:** Auditing and Review



Guidelines- the sections

- **Frequently Asked Questions are divided into the following sections:**
- Legislation
- Safety and Health Management System
- Planning
- Roles and Responsibilities
- Safety Statement and Risk Assessment
- Accident Investigation and Reporting
- Further Information and Support



Risk Assessments Listed

Art

Art Room
Ceramics
School excursions/day trips
Art Fire – Specialist rooms
First Aid - Art
Knives
Manual handling
Housekeeping
Portable electrical appliances
Housekeeping

Canteen

Canteen
Hazardous Substances - Maintenance
Fire
First aid - canteen
Manual handling- canteen
Portable electrical appliances- canteen
Housekeeping- canteen

Other Sections include:

Home Economics
P.E.
Science
Technologies
Maintenance
Beauty Therapy
Other activities
Computers
Cleaner
Farm Machinery
General School Areas
Home Economics
P.E.
Science
Technologies
Maintenance
Beauty Therapy
Other activities
Student Considerations
Blank Risk Assessment Templates



Guidance for schools

The HSA Education Sector Web Site will have links to all documentation relevant to schools from our web site.

- **Department of Education and Science (DES) www.education.ie**
- **State Claims Agency Web site www.stateclaims.ie**

Guidelines will be posted to Secondary Schools by the DES

Guidelines will be in a downloadable version on our web site.

All schools Primary or Post Primary will be able to download the Guidelines or Risk Assessments.